



SURELOCK MCGILL LTD  
ACCESS AND EXIT PROTECTION

a single system

## SURELOCK SLIMLINE

A single system - a specifier's dream

The new **Surelock Slimline** design retains the high standards set by Surelock McGill and features:

- Simple to specify
- Non-handed\* and bi-directional
- Automatic bolting as standard
- Proven rack and pinion mechanism
- 25mm throw for all bolts
- All steel construction with hardened bolts
- Attractively finished
- Entry options - key, access control, combination lock or free-entry in the case of fire check doors
- Exit options - key, access control, turnknob, panic or emergency
- Choice of cylinders from leading manufacturers

\* Panic exit devices currently require handing to be specified

*Surelock Slimline  
deadlocking  
device with  
turnknob release*



a single system

# SURELOCK *SLIMLINE*

A single system - a specifier's dream

The Surelock *Slimline* system is easy to specify. 1: Choose the basic system (2- or 3-way bolting). 2: Choose how you wish to enter. 3: Choose how you wish to exit. Specify the handing only if you need a panic or emergency exit device. That's it! The basic system is specified. Now you can consider whether you require any of the *Slimline* enhancements.

The *Slimline* system offers all the usual Surelock operational features and enhancements, but in a new universal package. Locking devices for the new system can be fitted to any door; left- or right-hand hung, inward- or outward-opening. This simplifies system specification for all applications.

## Feature points:

- Bi-directional (fits inward- and outward-opening doors)
- Positive engagement
- Easily adjusted
- 15mm diameter hardened bolts x 25mm throw

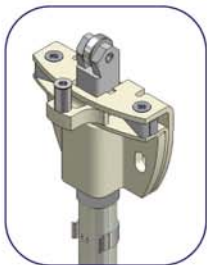
The principal of the new Surelock *Slimline* is unchanged. It offers the renowned Surelock strength and stability for the various levels of security and fire resistant doors.

## Benefits of the single system:

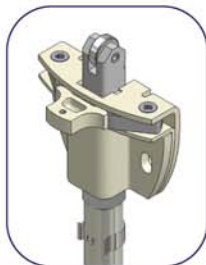
- Simple to specify
- Cost-effective
- Prompt delivery, due to reduced variant stockholding
- Easily installed, using steel template guide
- Full range of Surelock features for more demanding requirements
- 15mm diameter hardened bolts x 25mm throw

## New bi-directional restraint

UK patent application number 0504198.3

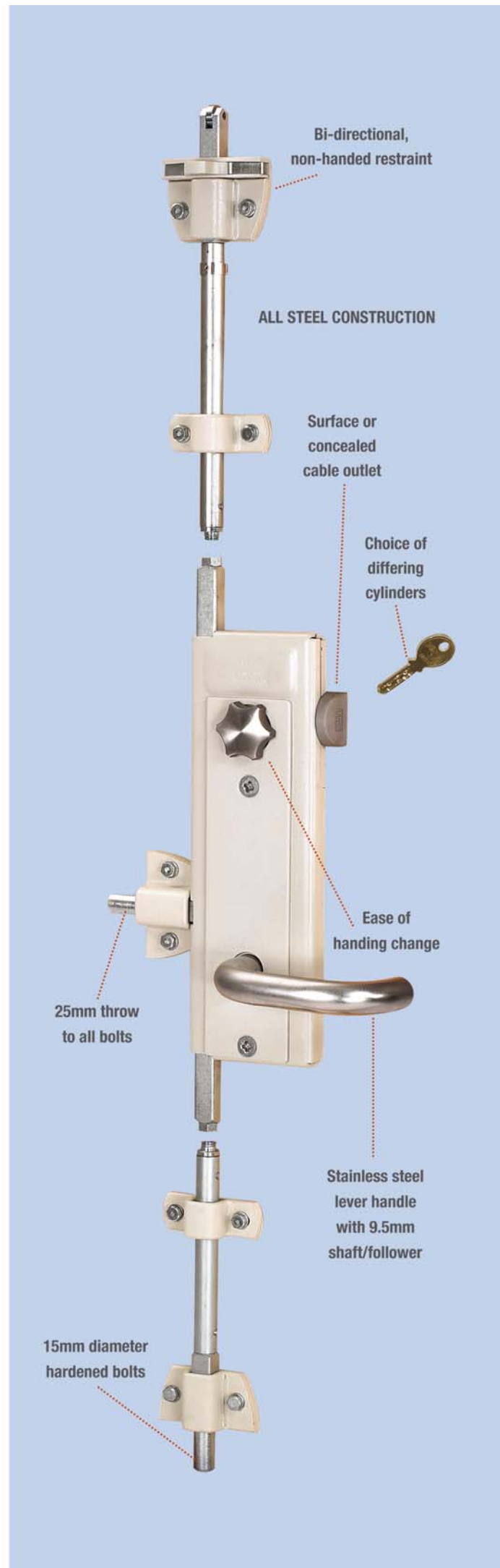
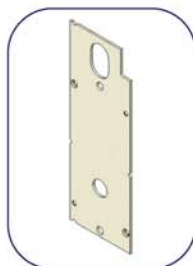


Inward opening set-up

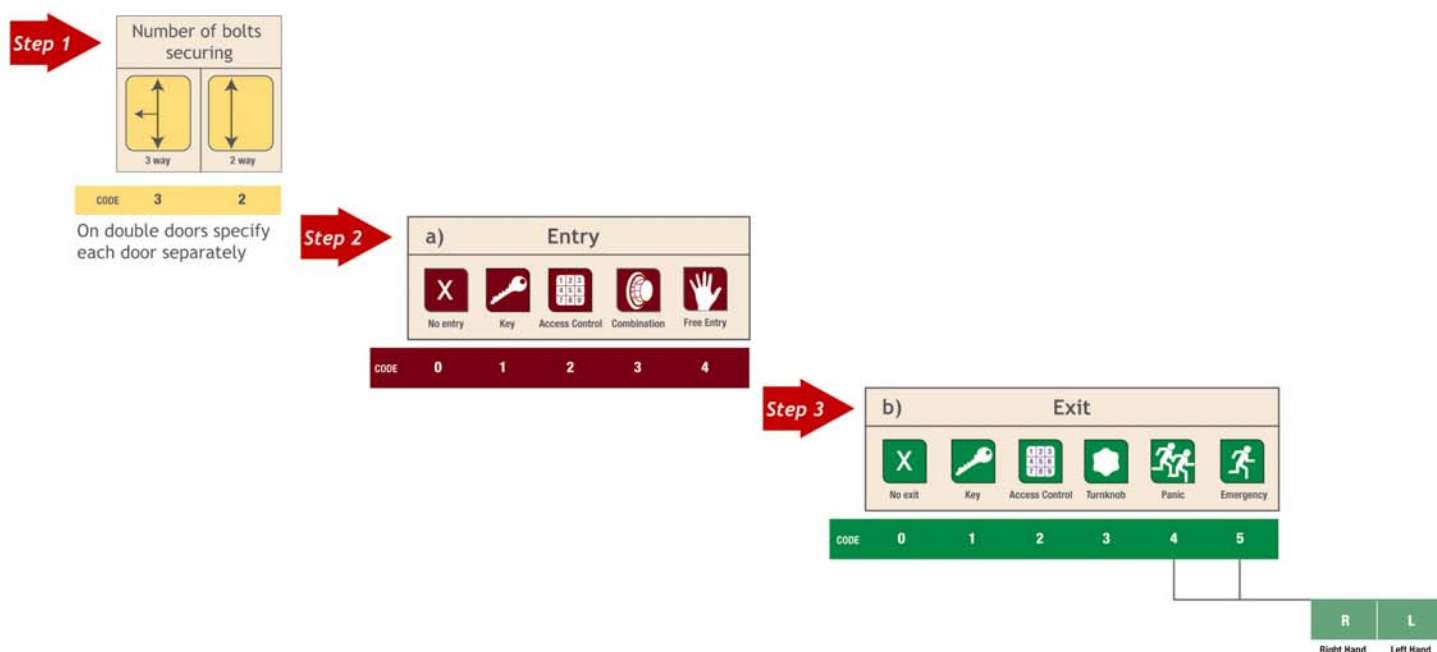


Outward opening set-up

- Unique restraint suitable for both inward and outward opening doors
- Non-handed, suitable for both right- and left-hand hung doors
- Easy adjustment for positive engagement
- Steel template provides accurate, rapid installation and acts as a drilling template for fixings, handle and cylinder positions

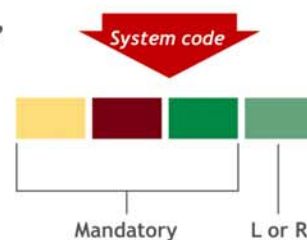


## Three steps to *Slimline*



Example : System code '314R'

3-point bolting device with external key entry and panic bar exit for right hand hung door



## Specifying guide

### Step 1 Select number of bolts

#### 3 3-point bolting

Secure a single door or the active (first to open) leaf of a double doorset at the top, bottom and centre

#### 2 2-point bolting

Secure the passive (first to close) leaf of a double doorset at the top and bottom only, or secure any door that does not require a horizontal bolt

### Step 2 Select entry method

#### 0 No entry, i.e. exit door only

#### 1 Deadlocking; with key and handle entry

Refer to options '0' for any specific choice of cylinder manufacture or suiting requirement

#### 2 Deadlocking; with access control, 12v solenoid, energise to unlock (fail secure) and handle entry

Refer to options 'R' for voltage and power variants

#### 3 Deadlocking; with Manifoil MkIV combination lock and handle entry

Refer to options 'K17' for lock variant

#### 4 Bolting; with free-handle entry.

For example a non-security fire door

### Step 3 Select exit method

#### 0 No exit, i.e. entry door only

#### 1 Deadlocking; with key and handle release on the inside

#### 2 Deadlocking; with access control and handle release on the inside

#### 3 Deadlocking; with turnknob and handle release on the inside

#### 4 Bolting; with panic bar release on the inside

#### 5 Bolting; with green lever emergency handle release on the inside